

Illustration legend



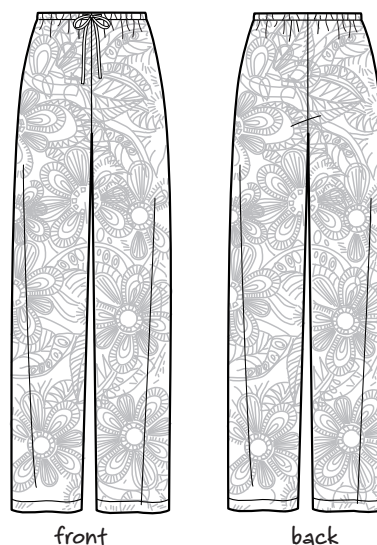
What you'll need

- ☐ tapemeasure
- ☐ fabric
- ☐ thread
- ☐ sewing machine
- ☐ straight pins
- ☐ fabric scissors
- ☐ pencil
- ☐ ruler
- ☐ tape
- ☐ fabric marking pen
- ☐ interfacing or dryer sheet
- ☐ hand sewing needle
- ☐ large safety pin
- ☐ fabric glue (optional)

About this pattern

This pattern is multi-sized, which means that all available sizes are in one pattern. Since there are five different sizes included, there are five different cutting lines, one for each size. Look closely and you'll see that each cutting line is different: one is solid, one is dotted, one is dashed, and so on and so forth. This is done to avoid confusing one cutting line with another. Once you choose the size you want to sew, it's a good idea to take a felt tip pen or highlighter and trace over the appropriate cutting line to make it even easier to keep track. See **Find your pattern size** for how-to's on getting the right size pattern to fit you.

Finished garment

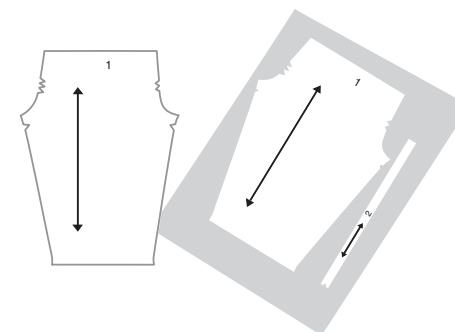


Simplicity's seam & hem allowances are all included in each pattern piece, but are not marked as actual lines. The standard seam allowance given is 5/8" unless noted differently. Hem allowances vary and depend on each individual garment; hem allowances are noted as text on the pattern tissue.

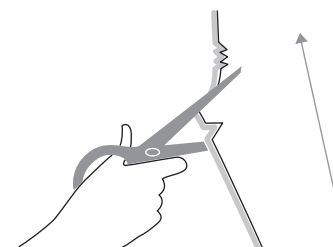
In the pant leg itself there is a horizontal double line; this is the lengthening & shortening line, which allows you to make the pants longer or shorter, depending on your height and personal preference. Why not just add on or chop off what you need at the hem? Look at the pattern piece and you'll notice that it tapers slightly. Merely adding or subtracting at the hem will change the shape and overall appearance of the finished product.

The arrow printed on a pattern piece is the grain line. Grain lines are printed on the pattern to show where on the fabric the piece should be placed. Unless noted otherwise, the grain line should be matched up to the lengthwise grain of the fabric. If you look at a yard of fabric, you'll see that

there are two edges that look finished and don't unravel or come apart; each of these edges are called the selvage, which is formed during the fabric weaving process. Woven fabrics have two grains: the lengthwise grain, which runs parallel to the selvage, and the crosswise grain, which runs perpendicular to the selvage.

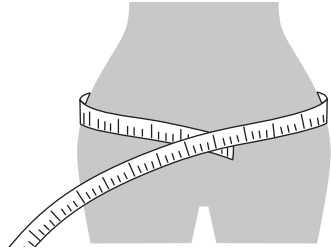


notches are the tiny triangular markings that are printed in strategic spots on the seam allowances on pattern pieces. Their job is to help the sewer match up one piece to another. If the notches don't line up exactly, the pieces are not being put together properly. Cut out the entire shape of the notch, as shown here. Be careful to cut the notches accurately to ensure that they will match up when you are assembling your garment.



Find your pattern size

This pattern is based off of the hip body measurement; each lettered size (XS, S, M, L, XL) covers a range of hip measurements. Take a tape measure and measure your hips at the widest point, approximately 9" from the natural waistline. This is your actual body measurement. Find the size with a body measurement range that most closely resembles your own; pattern sizes run differently from ready-to-wear sizing, so don't panic if it's not the size you normally buy! Once you've found the size, follow that column down to the finished garment measurement. This is the hip measurement of the actual finished pants, which includes ease that gives room to walk, bend, sit and generally wear them. Take your tape measure and wrap it around your hips, this time matching the finished garment measurement of the size you've chosen. See how much room there is. Too much? Go down a size. Too little? Go up a size. There is no wrong or right answer; this is strictly a personal preference. Just be sure not to go exactly to your actual hip measurement, or the pants are going to be way too tight to wear!

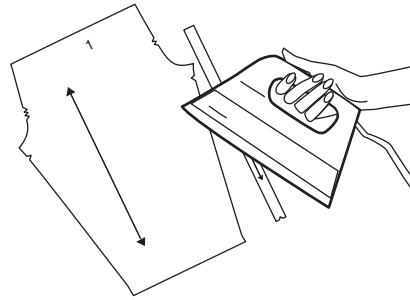


Prep your pattern

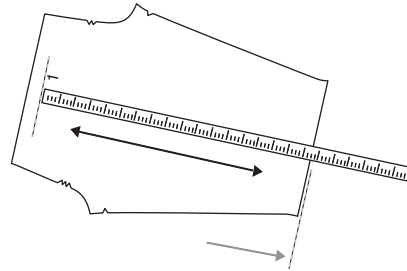
When you first open up the pattern tissue, you'll find that it comes in one big piece. Cutting the individual pattern pieces apart will make them much easier to work with. Cut around each piece you are going to use, just outside the largest cutting line. Once they have been separated, go ahead and throw away the excess tissue — you're not going to need it anymore.

Make sure that the pattern is smooth and flat, as wrinkles and folds can distort the shape of the piece. Press each piece with a warm, dry iron with absolutely no steam; the

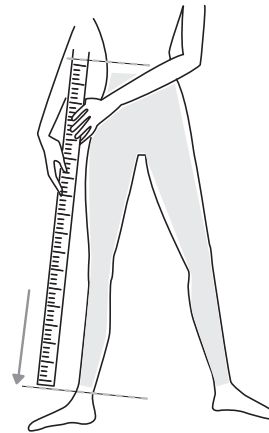
tissue is fragile, and does not hold up when wet.



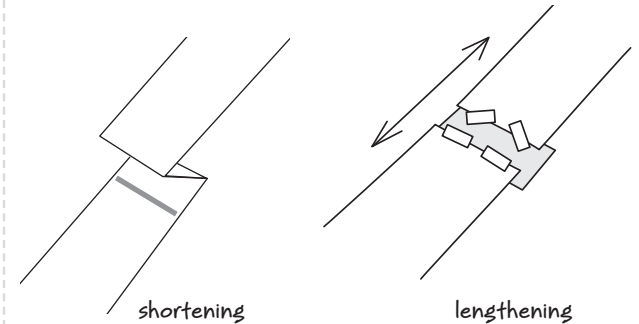
Take a tape measure and measure from the waistline marking on the pattern to the cutting line at the bottom. Subtract the amount of hem allowance noted on the pattern; this final measurement is the Finished Garment Measurement of the pants.



Using the tape measure, measure yourself from your natural waistline to where you want the pants to end.

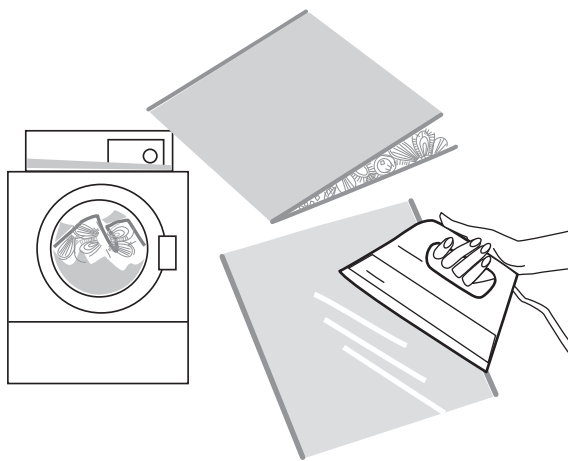


Compare this measurement to the previous one, and see what, if any, difference there is between them. Depending on the difference, you may have to lengthen or shorten the pattern piece. To lengthen, cut the pattern in the middle of the double Lengthening & Shortening Line. Spread the pieces apart the amount you need and slip a piece of paper underneath. Tape in place to keep it secure. If the cutting lines of the pant leg get jagged after adding the paper, use a ruler and pencil to straighten them out. To shorten, measure from the center of the Lengthening & Shortening Line the amount you need to take off and mark a line that runs parallel to the printed line. Fold along the printed line and fold up until it meets the line you marked. Pin or tape in place, and straighten the pant leg cutting lines if needed.



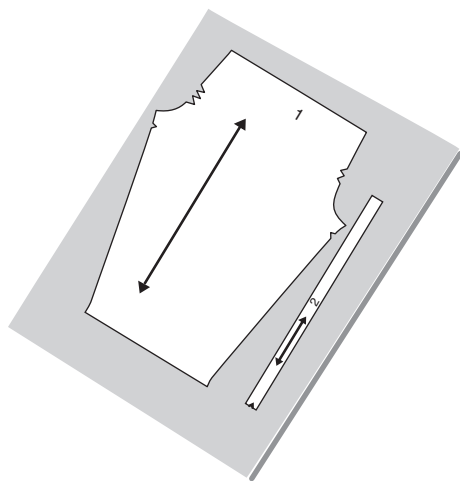
Prep your fabric

Treat your fabric the same way you plan on treating the finished garment: wash and dry as needed. This will pre-treat the fabric so that you don't have your pants shrinking on you the first time you put them in the laundry. Fabric needs to be smooth and flat before cutting, so take the time to press your pre-washed fabric properly. Fold your fabric in half along the crosswise grain, with the right sides together; for example, if you have 3 yards of 45" wide fabric, your folded fabric will be 1 1/2 yards of 45" wide fabric. Cut the fabric in half along the fold. If you have a print that has a definite top and bottom, you will want to rotate one of the halves 180 degrees, so that the prints match up top to bottom on both pieces — otherwise you'll end up with your print facing one way on one leg and the opposite way on the other!

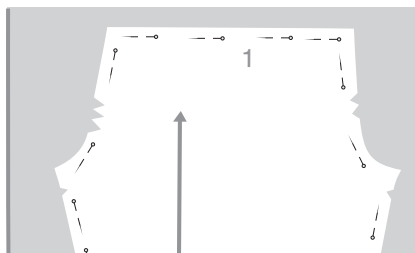


Cutting instructions

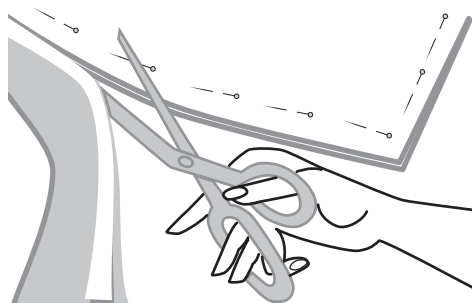
1. Lay the pattern pieces on the double layer of fabric, lining up the printed grain line with the lengthwise grain of the fabric. It should look like the Cutting Layout as printed here.



2. Pin the pattern to the fabric, pinning through all thicknesses. Start at the middle of each side and work your way to the corners, smoothing the pattern as you go to avoid bunches or bubbles. Be sure to place your pins parallel to the cutting lines, so they don't get in the way when you are doing the actual cutting.

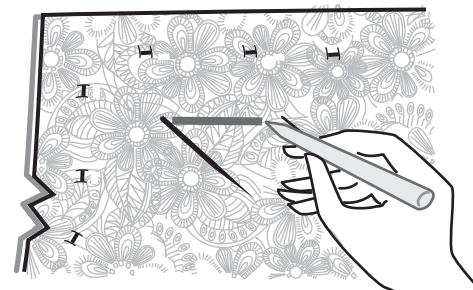
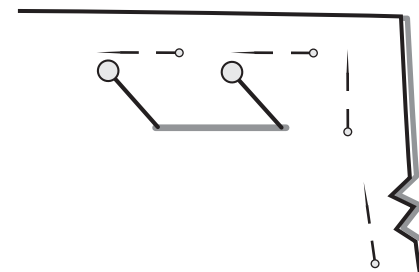


3. Cut with your scissors positioned so that the pinned pattern is on the side that is holding the scissors, and the excess fabric is on the other side. For example, if you hold and cut with your right hand, the pattern should be to the right of the scissors, and the excess to the left; if you cut with your left, the opposite applies. This gives maximum control while cutting, enabling you to gently pull away the excess with your other hand to keep it out of the way while you work. Cut along the highlighted cutting line, all around the pattern piece. Carefully cut out all applicable notches.



Marking instructions

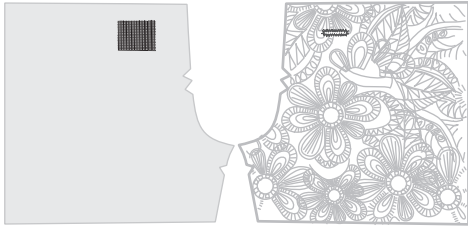
1. Note the small "H"-shape that appears on the top at the waistline of the pattern piece. This marking indicates the buttonholes needed to pull the drawstring through. Note that there is one buttonhole position for each size; use the one marked with the same size you used to cut the pattern from. Line up the pattern piece with one of the fabric pieces, with the pattern on the WRONG side of the fabric. Take two pins and poke them through the ends of the buttonhole, until the pin points stick out through to the right side of the fabric. With a fabric marking pen or pencil, connect the pin dots. Repeat on the other pant leg, so you have one buttonhole marked per leg.



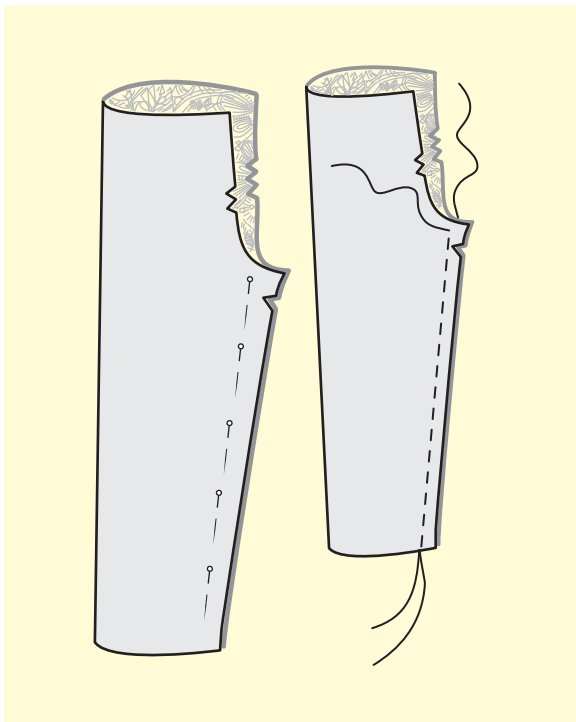
2. There are also two small dots that appear on the pattern tissue, located above and to the right of the buttonhole markings. On the WRONG side of the fabric legs, mark the positions of these dots using the same method described above. Mark these only as dots.

Sewing instructions

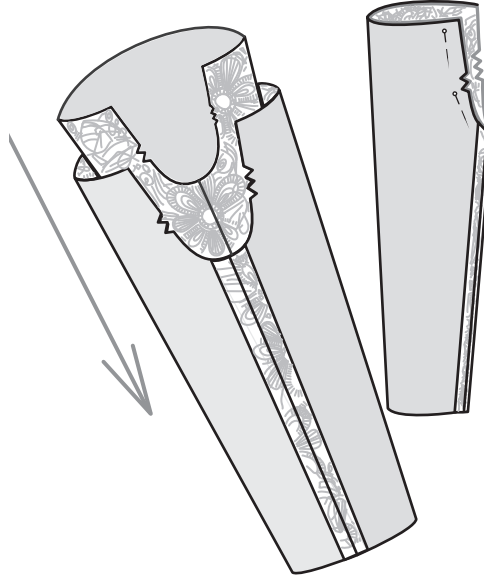
1. On the WRONG side of the fabric, place a piece of interfacing where the buttonhole marking would be on the right side. Interfacing is a stiffener that is used to reinforce fabric by acting as an extra layer. In this case it will reinforce the buttonholes so that they don't stretch or tear while wearing. Most interfacing is fusible, so it can be ironed on. If you don't have any interfacing on hand, try a piece of softener dryer sheet as a substitute. Use a glue stick or spray adhesive to attach it to the fabric; you won't need to iron it on. Following your sewing machine's instructions, make a buttonhole on each pant leg where marked. Cut the buttonhole open with sharp pointed scissors, being careful to not clip any of the buttonhole stitching.



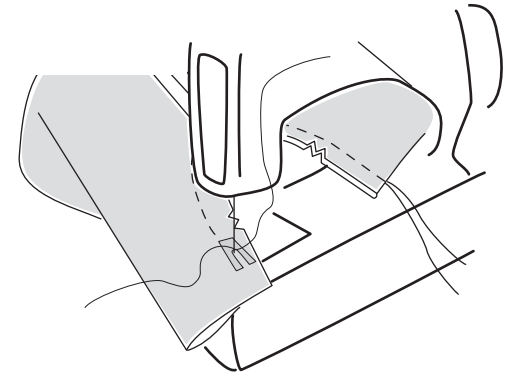
2. With RIGHT sides together, pin inner leg seam together, matching notches. Stitch in a standard 5/8" seam. Press the seam to set the stitches, and then press it open to keep it flat and even. Repeat with other pant leg.



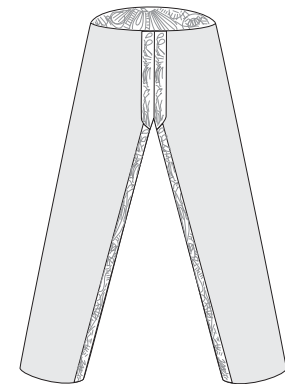
3. Turn one pant leg RIGHT side out. Insert this pant leg inside the other, so that curved crotch seams, notches and dot markings match, and RIGHT sides of pant legs are facing each other. Pin securely in place.



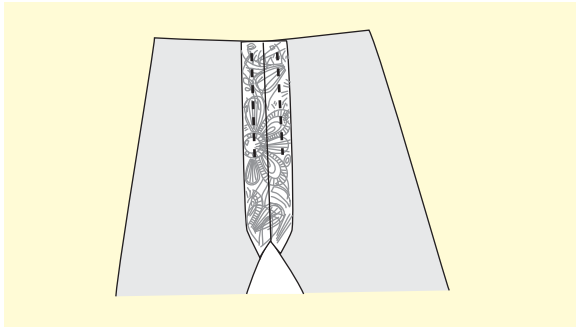
4. Stitch crotch seam; begin at the back and work the stitching toward the front. Stop stitching at the first dot. Begin stitching again at the second dot and complete the seam; this will leave an opening for inserting the elastic and drawstring. For extra strength stitch the long seam again, right over first stitching. Trim the seam in between the notches to 1/4". Press the remaining seam open.



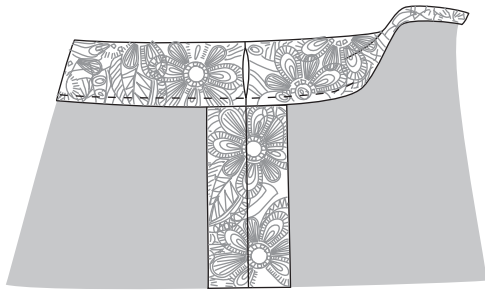
5. Turn the inner pants leg so you have a full pair of pants that are inside-out. Now is the time to make the waistline casing, which will hold both elastic and a drawstring. Hold the pants so that the waistline is at the top and the crotch seam is centered in the front and the back. Note that these seams are pressed open.



6. To keep elastic from getting stuck in the open crotch seam allowances, use a long machine stitch to baste seam allowances to the garment; be sure to remove these basting stitches after the garment is finished. If you prefer, you can also use a drop of fabric glue to hold the seam allowances in place; this should wash away when the garment is laundered.



7. Fold upper edge of pants down 1 1/8" (2.8 cm) to the INSIDE; this forms the actual casing. Press in place. Fold the raw edge under 1/4" (6mm) and press. Stitch casing closed, sewing as close as possible to the lower folded edge.

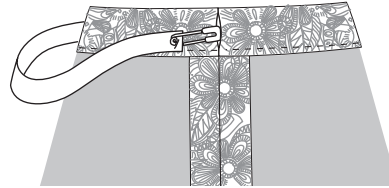


8. Take a piece of elastic and wrap it around your waist until it fits comfortably. Add 1" (2.5 cm) to this measurement; cut the elastic to this final length.

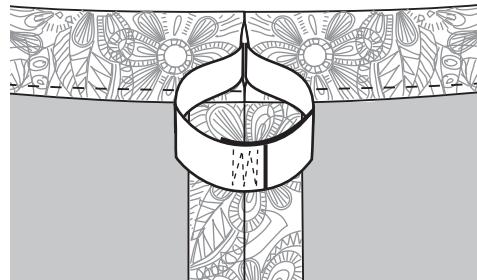


Pin the large safety pin to one end of the elastic. Insert this end into the opening that was left in the casing, and thread the elastic all the way through until it emerges from the other side of the opening. Overlap the elastic ends and safety pin

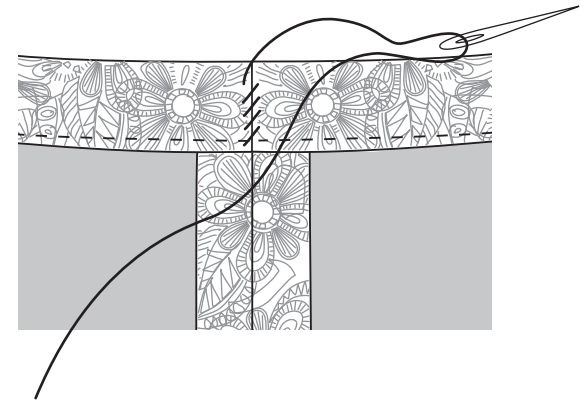
them together. Take this opportunity to try on the pants one last time to adjust the fit; if the elastic is too loose, overlap more, if too tight, overlap less.



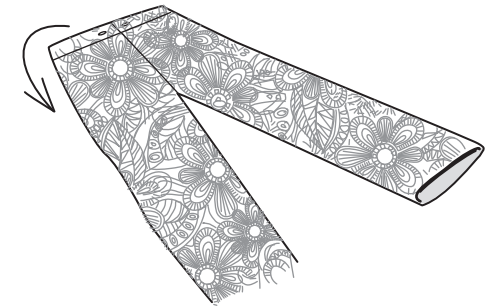
9. Stitch the overlapped ends of the elastic securely. Pull the elastic until all of it is inside the casing.



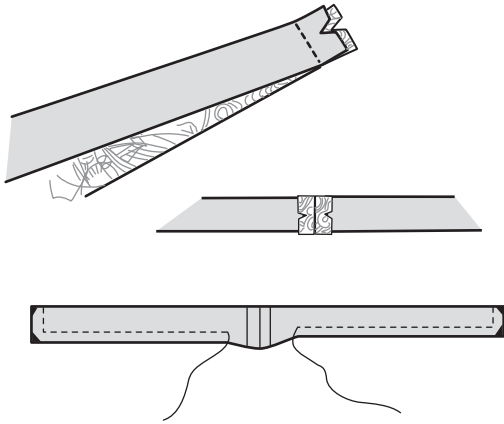
10. With a needle and thread, hand-stitch the casing opening on the inside closed. Distribute fullness over the elastic evenly, so there is no bunching or binding at the waistline. If you used machine basting, this is the time to pull the threads to remove it.



11. Turn the pants RIGHT side out, in preparation for the drawstring to be inserted.



12. With the RIGHT sides together, stitch the short, notched ends of the drawstring pieces together in a 3/8" (1 cm) seam, forming one long piece. Press this seam open. Fold the drawstring in half lengthwise with RIGHT sides together and pin in place. Stitch the ends and long edge together in a 3/8" (1 cm) seam, leaving an opening on the long edge to turn the piece. Leave the opening in the middle of the drawstring, which will be easier to turn. Trim the seam and corners as shown. This will eliminate bunches of fabric in the corners once the drawstring is turned right side out.

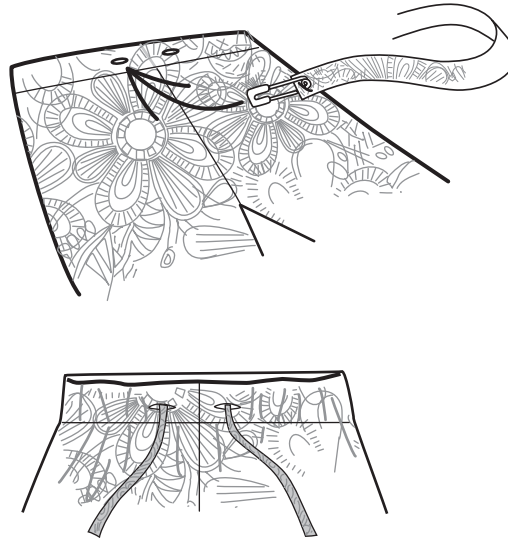


13. Turn drawstring RIGHT side out and press flat. Hand-stitch the opening closed.

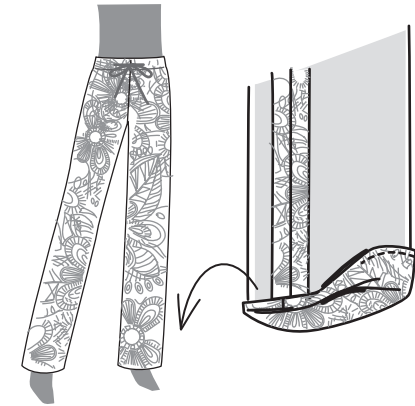


14. Take the safety pin and pin it to one end of the drawstring. In the same way you inserted the elastic, insert the drawstring into the waistline casing. Start at one buttonhole and work your way around, exiting through the other buttonhole. Remove the safety pin and knot the ends of the drawstring.

Pull the drawstring ends until they are even.



15. Try on the pants and see where you would like the finished hem to be. Mark this length by placing pins at the front, back, inside seam and outside at this spot. It may be difficult to do this on your own, so you may want to get a friend to help. Put the pants leg on a flat surface and match up the markings so that the hem is straight and even. Fold this amount up to the INSIDE and pin in place. Remove the pins you used to mark the hem and press the fold flat. Trim the cut edge if needed to even it out. Turn this edge under 1/4" (6mm) and press. Stitch the hem, close to the inner pressed edge. Do the hem on the other leg, using the first hem as a guideline. Before stitching the second hem, measure the inner leg seam of each leg and the outside leg, from top to bottom.



If everything has gone right, the measurements on both legs will match. If not, adjust the un-sewn hem until they do, to avoid one pant leg being longer than the other.